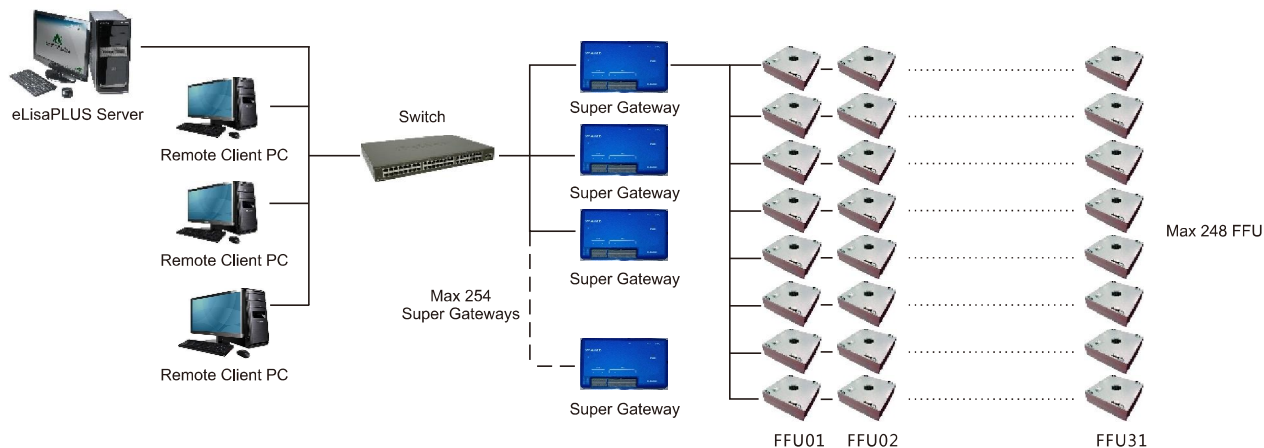


eLisaPLUS FFU control system

A super gateway is used to achieve remote control terminal (PC) connection between the Radical EC FFU.

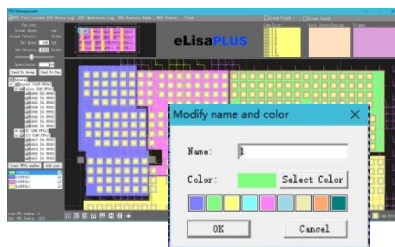
- Every super gateway can control 8 groups of FFU, totaling to 248 sets of FFU. One computer can connect 254 super gateways using a switch, controlling a maximum of 62992 sets of FFU.
- The server receives updates from the super gateways every 8 seconds. eLisaPLUS is able to respond 10 times faster than other normal control systems.



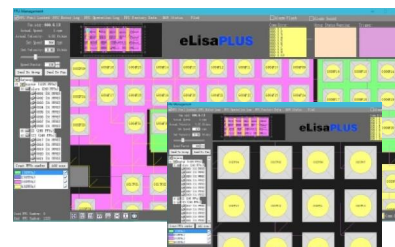
eLisaPLUS is a multi-level control system that is located on a public infrastructure network based on open system standards that allows for seamless integration and interoperability. eLisaPLUS is designed for large-scale FFUs in large-scale clean room to achieve remote centralized control with perfect authority control and many other features, making it very suitable for large and medium-sized enterprises.



AutoCAD core design results in small software size, more convenient import and management. The interface can be zoomed freely with no distortion or pixilation, and the mouse can drag and drop freely at any designated region.



Customized control region can be designated based on on-site environment. The region can be irregular in shape, and unconnected FFU can be planned into the same group.



Rich FFU parameters display allows for reading and control at a glance. All FFU icons are encoded. During a fault the icon will flash so faults are easy to find.